

ACCURIO® QUICK START

1 Locator
needle guide
(sold separately)



Power & sleep



Lumbar preset



Power off

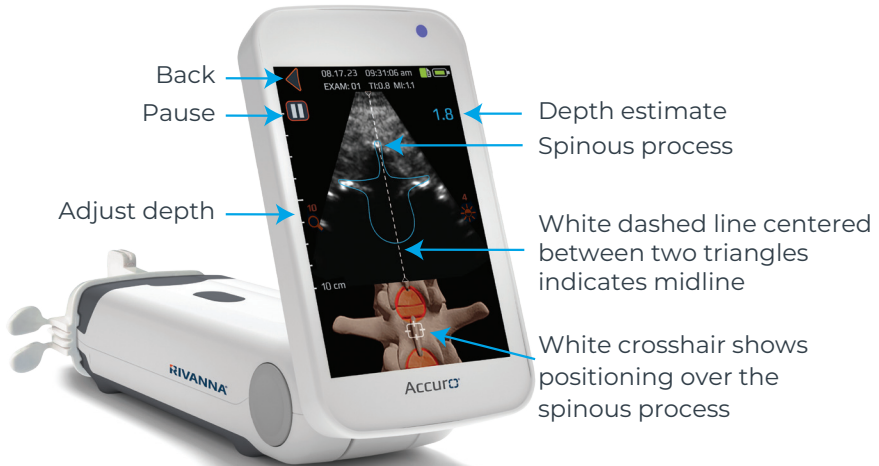
Scan the QR code for
additional training resources



SCAN ME

Scanning with Accuro

The Spinous Process (Blue Overlay)

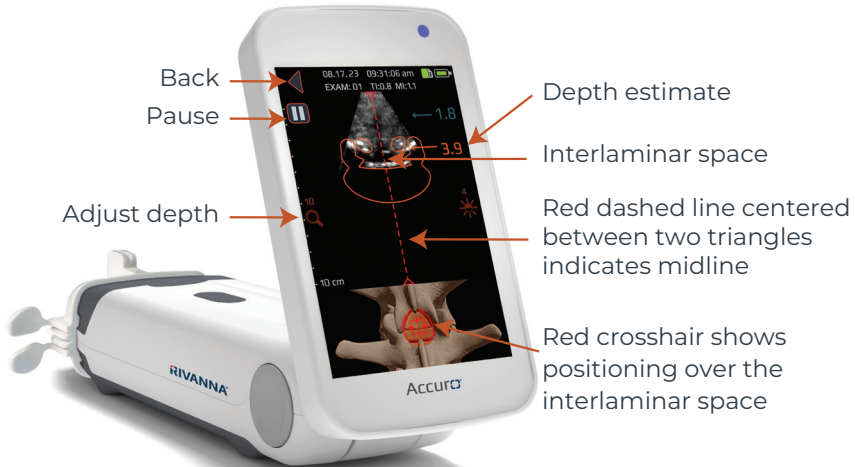


Scan slowly horizontally: Midline is indicated as the white dashed line centers between the two triangles.

! The overlay is BLUE when the scanning plane intersects the **spinous process**. Proceed to scan vertically along the spine until the interlaminar space (orange overlay) becomes visible—**as depicted in the next panel**.

Scanning with Accuro

Find the Interlaminar Space (Orange Overlay)

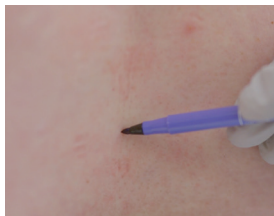


Scan slowly vertically: The overlay is **ORANGE** when the scanning plane intersects the **interlaminar space**.

NOTE: The dashed line in the ultrasound image and the crosshairs in the 3D image turn red when you have reached an interlaminar space at midline; this is when to release the locator—*as depicted on the back*.

Marking the Skin

with the Accuro Locator Needle Guide



Using the thumb and index finger of your non-dominant hand, grip the locator within the wings. Stabilize the non-dominant hand against the patient's back, then pull back on the Accuro to release the locator. Employing the preferred technique, identify the midpoint at the center of the skin indentations.